

# Nu News

Nu Chapter and Greater Seattle Alumnae of Alpha Xi Delta ~ Autumn 2019

**KODACHROME** - If you have email and prefer to read Nu News with beautiful COLOR pictures please email us at [axidseattlealumnae@gmail.com](mailto:axidseattlealumnae@gmail.com) with your email address and request "Paperless Please!" in the subject. We'll stop paying to print a black and white copy and mail it to you twice a year, which will save money! You'll still get the digital copy in eNews as well as can find it on the website <http://seattlealphaxidelta.org/> soon after print.

## Nu Chapter Beautification

Corporation had a exciting summer making huge strides in our 10 year renovation plan! The Main house received a new more modern bannister in the front entry and new hardwood flooring in the lower level. At the Annex the largest suite was fully remodeled complete with new furniture, hardwood flooring, lighting and plenty of closet space. Both properties received a landscaping refresh for curb appeal and lots of new lighting, fixtures, furniture and decor that are the perfect compliment of updated style, function, and the Alpha Xi Delta "brand" for interior design set forth by the National Housing Team.



Just in time for our busy summer of projects, we have added some new volunteers to our team!

Alyxis Burks,

Nu PC14 is our new Secretary, Amber Pearce, Nu PC04, is our new Treasurer and Kate Johnson, Nu PC13, is our new Design Specialist. The Corporation Board loves having the opportunity to continually work on each property so that the beauty on the outside can reflect the beauty of our wonderful sisterhood inside.



Name: \_\_\_\_\_

Address: \_\_\_\_\_

City: \_\_\_\_\_

State: \_\_\_\_\_ Zip: \_\_\_\_\_

Email \_\_\_\_\_@\_\_\_\_\_.com

Phone # \_\_\_\_\_-\_\_\_\_\_-\_\_\_\_\_

Chapter: \_\_\_\_\_ Initiation Year: \_\_\_\_\_

## Contact Info Update? Money enclosed?

- This contains updated contact info for me
- Let's go paperless! No more mailers for me
- I've enclosed \$45 for my annual dues made out to Seattle Alumnae of Alpha Xi Delta
- I've enclosed a donation to Nu chapter scholarships made out to Seattle Alumnae of Alpha Xi Delta
- I've enclosed a national scholarship donation (separate check to Alpha Xi Delta Foundation)

## Ways to Get More Involved & Meet Sisters:

Our annual Alum Holiday Party will change venue this year to the home of Jacki Lorenz! Join us on Tuesday, December 17th at 6pm for the festivities! Jacki will provide the entree and breads. We ask that each attendee bring wine/beverages, a salad or dessert. Please RSVP to Jacki by Friday, December 13th and let her know what you will bring. You can reach Jacki at jackilorenz618@gmail.com. She will respond with her address and other pertinent information. As always this is also a white elephant exchange; to participate please bring a wrapped gift that is gently used or costs no more than \$10.

Check out our website: <http://seattlealphaxidelta.org/> or Follow us on Twitter & Instagram: @AXiDSeattleAlum

Sign up to receive our monthly e-newsletter! Just email us at [axidseattlealumnae@gmail.com](mailto:axidseattlealumnae@gmail.com) to sign up.

Attend our quarterly Board meetings: everyone is welcome, even if you don't have a position! We create Facebook events for our meetings and they are typically on weekday evenings in Seattle.

Are you looking for a job? Do you know of an open position? Do you need career/interview/resume/grad school tips or advice? Join our Worker Xi's Facebook group: <https://bit.ly/2yt52NA>

### Please welcome our new alumnae president and board additions

I am so thrilled that one of our sisters, Mary Cube Valmonte, NU '90, has stepped up to take the role of president. She has many years of leadership experience, most recently with Seafair. She became a Commodore then had an officer role culminating with being Commandant with the Seattle Seafair Commodores this year. She was only the 5th woman and 1st minority woman to become Commandant since the Seafair family group was formed in 1955. Her year as Commandant is coming to a close so we will benefit from her experience.

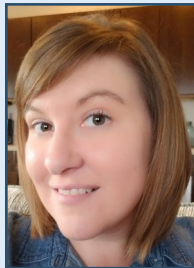


#### Other new officers include:

Aimee Murray is our philanthropy chair. Aimee is very invested with our national philanthropy of Autism Speaks as she has two children on the Autism scale. Aimee recently left the military and has started her new job as a prosecuting attorney with Snohomish County.



Amber Pearce, NU '04, has taken over as our representative for Seattle Panhellenic. She held several chapter positions including Membership VP and President. Upon returning to the area after completing her Masters back east, she now works for Starbucks as a business systems analyst.



Donna Schneider has volunteered to be Secretary in addition to creating the monthly e-newsletter. Donna has been on the alumnae board for more years than she cares to admit including 4 years as president. She pledged ΓΑ '70 at San Diego State University.

### Open Alumnae Board positions

Though we have filled several board positions, we still have the following roles open:

VP Programs handles the planning for pickle mix and Founder's Day. The chapter alum relations director and the chapter communications VP assist. Both venues have already been selected and reserved so we have a good start on the planning.

VP Membership is responsible for contacting new members (who usually email us with their interest). We want to be sure each new sister to this area is contacted promptly and informed about our activities.

Communication Assistant - Help the Communications VP prepare the twice yearly hard copy newsletter for mailing. It is anticipated that this position will become the VP next May. The alum board provides articles and pictures. This role is responsible for taking the newsletter to the printer. Once printed, we have an alum meeting to fold the newsletter.

Overlake Panhellenic Rep (OAP) - We are looking for a back-up to assist Debbie Love. OAP meets only 4 times each year (October, January, March, and May) at a member's home on the Eastside. OAP has their first meeting next Thursday, October 10, 2019 at the home of Jan Buchanan, Alpha Gamma Delta, 2019-2020 OAP President in Bellevue (Clyde Hill) beginning at 9:30 A.M. Any AXiD Alumnae interested in attending should contact Debbie Love, at 425-861-4789 (home) or [Debbie.love@frontier.com](mailto:Debbie.love@frontier.com).

**Nu Chapter News** We ended the summer with work week and recruitment, where we grew our sisterhood before welcoming our new members! Work week featured pilates and spa sisterhoods and our annual alum exchange for preference practice. We always love being able to spend time with our alumnae and are so appreciative of the support we receive, especially during recruitment!



We are entering the fall quarter with a great new member class! We have 42 new members, 31 from formal fall recruitment and 11 from continuous open bidding directly following bid day. Our bid day was 'Girl's Tour' themed — which is a pop culture reference centered around female empowerment — so we dressed in light pink, white, and silver and had a candy bar and cotton candy machine! Bid week was packed with fun events and sisterhoods, the first of which being Husky Gameday. We also had our annual sisterhood retreat, a tie dye sisterhood, did our annual dessert exchange food fight with Theta Xi Fraternity, went to the University District Farmers Market, had sisterhoods with Kappa Alpha Theta and Alpha Gamma Delta, and had Dream Drinks, a food truck with smoothies, Boba tea, and more, visit us at the main house. We



have had so much fun already with our Member Class '19 and are excited to get to know them even more! We are looking forward to our big/little reveal next week and our initiation, which is Saturday, October 26th. We would love to have our alums join us!

**Initiation** Nu Chapter is Initiating a new class of Alpha Xi Deltas on Saturday, October 26th beginning around 10am. Since Pickle Mix has moved to Winter Quarter, this is the BIG opportunity to connect with undergraduate members and show them how AXiD is a life-long engagement, just by showing up. One of the goals of every AXiD Chapter, is to host regular events where they invite alumnae. Help make this a big, encouraging event for our youngest members by turning out in force with a listening ear to hear more about what the undergraduate members are doing now and planning for the future. The student officers are currently in the final stages



of booking the event space as they hope to host as many alumnae as can attend for the on campus celebration as we add to our sisterhood. Look for more information on the Facebook event page and be on the look-out for a special email invitation with final details. <https://www.facebook.com/groups/2339258203/>. White Quill Attire is preferred to attend Initiation. Please endeavor to wear white including white shoes and don't forget your Quill. If you find your closet temporarily without these items, wearing light colored clothing would be the best alternative.

**Panhellenic Alumnae Network Night** Join with other sorority alums for a networking evening to assist collegians. It is scheduled for November 21st, 6-8pm, at the Graduate Hotel which is located near the UW. Any questions about the event can be directed to Sajal Sanan, the Panhellenic President. Her email is [phpres@uw.edu](mailto:phpres@uw.edu).

<http://seattlealphaxidelta.org/>

Twitter/Instagram: **AXiDSeattleAlum**

Join our Facebook Group: "Alpha Xi Delta Seattle Area Alum"

**Go Paperless!** If you love the colorful digital PDF copy of Nu News attached to eNews and on our website and want to opt out of future paper-copy mail, please email us your name/address with the subject "Paperless Please" to [axidseattlealumnae@gmail.com](mailto:axidseattlealumnae@gmail.com)

## Please Pay Your 2019-2020 Dues

Your Alpha Xi Delta Alumnae dues cycle runs from September 1 through Founders Day each year. You can pay your \$45 total annual dues three ways:

1. <http://seattlealphaxidelta.org/Events.html> >Donate (click the yellow Donate button and enter "Dues" in the comment section) to use Paypal.
2. Write a check while you're attending one of our two signature events - our Pickle Mix Scholarship Auction (February 1) or Founders Day (April 5).
3. Mail a check to our Treasurer, Lisa Hackney, at 21226 Shell Valley Road, Edmonds, WA 98026

## **Make checks out to Seattle Alumnae of Alpha Xi Delta.**

The \$20 in local dues pay for our bi-annual Nu News mailing, Overlake and Seattle Area Panhellenic dues, and Nu Chapter Senior Night. \$25 National Fraternity dues allow our organization to perpetuate fraternal growth while providing opportunities to foster intellectual, professional, and personal growth for all Alpha Xi Delta Sisters (annual check is sent to Nationals just after Founder's Day). If you have any questions, please email [lisahackney@comcast.net](mailto:lisahackney@comcast.net).

-Lisa Hackney Hatfield, Alumnae Assoc. Treasurer

## **SEATTLE ALUMNAE OF ALPHA XI DELTA**

**21226 Shell Valley Road**

**Edmonds, WA 98026**

**ADDRESS SERVICE REQUESTED**

NON-PROFIT ORG.  
US POSTAGE  
PAID  
SEATTLE, WA  
PERMIT NO. 4626

**Pickle Mix:** Saturday, February 1st in the HUB South Ballroom, 10am (*to be confirmed*). Mark your calendars for this fun event! As a reminder we have moved Pickle Mix from November to February so we are not competing with holiday events. All proceeds are used by the alumnae association to give scholarships to needy Nu chapter sisters.

If you haven't kept up with the rising cost of tuition it is more than \$10k for residents and an astonishing \$37k+ for out of state students! These figures do not include the cost of room/board which is \$12k+/year.

Please start thinking about items you can donate. We will have both a silent and live auction; live auction items that sell well are tickets to cultural/sporting events, a night's stay at a nice hotel, gift baskets with a theme like coffee/chocolate, wine with glasses or goodies, or a tea lover's basket, as well as gift cards.

**Founder's Day** On Sunday, April 5th, starting at 10am, we are returning to the Ballard Bay Club this year. We will again have a light brunch and grand view. Lots of free parking is available. More details will follow in future eNewsletters and the next Nu News – but be sure to put the date on your calendar! (Pic: last year's event)

